



# MULTIHULL SOLUTIONS REGATTA

**PHUKET 2018**  
A Phuket Yacht Club event



**Organised by:**



**Title Sponsor:**



**Race Day Sponsors:**



**Event Supporters:**  
**eastmarineasia.com**



**Media Supporters:**







**Course 10**

START  
 Mark 1 to Port  
 Cape Panwa Safe Water Mark to Port  
 Pass through GATE  
*(Committeeboat to STB, Pin to Port)*  
 Mark 1 to Port  
 Mark 2 to Port  
 FINISH

**Course 11**

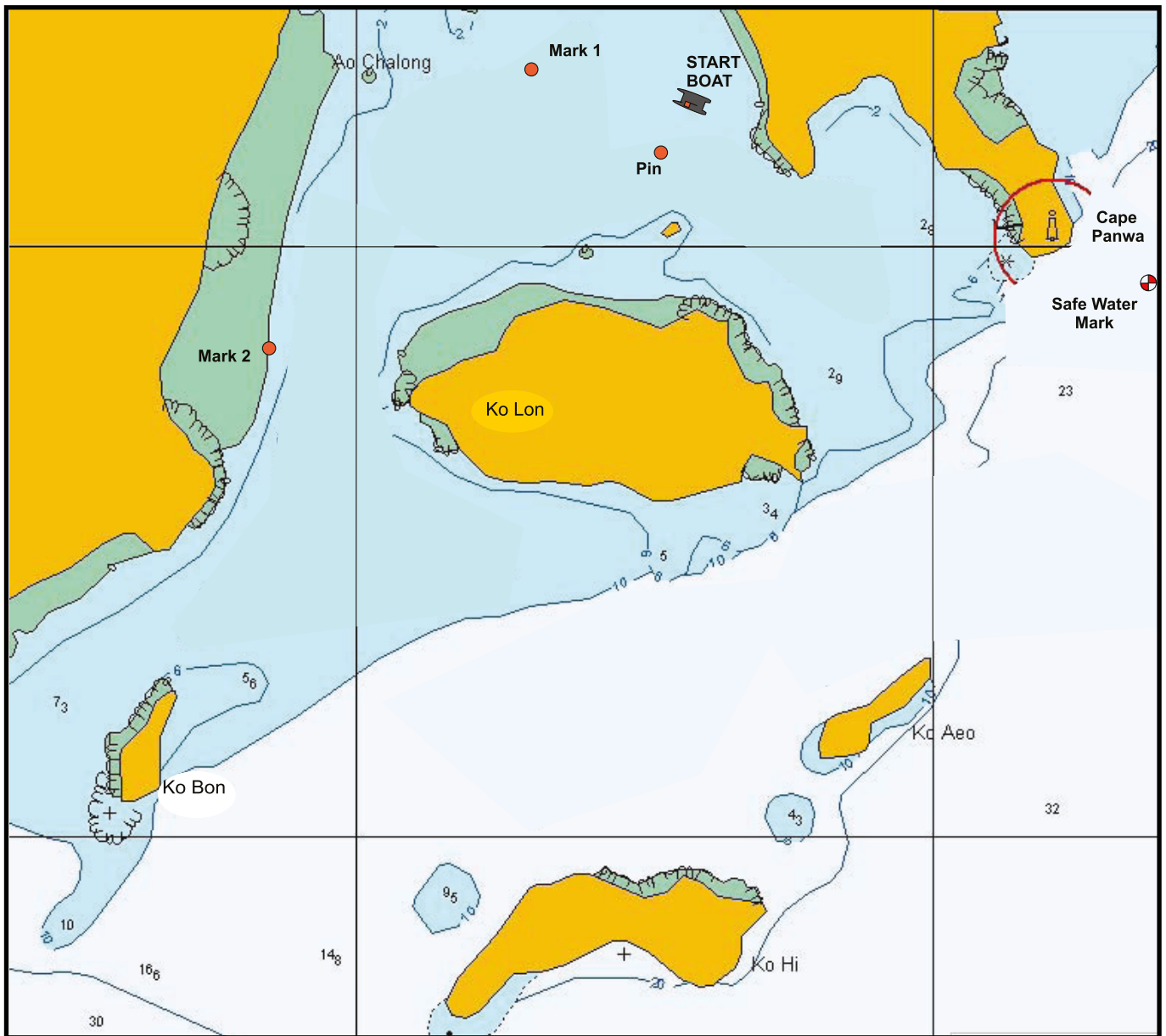
START  
 Mark 1 to Port  
 Cape Panwa Safe Water Mark to Port  
 Pass through Gate *(Committee Boat to STB, Pin to Port)*  
 Mark 1 to Port  
 Ko Bon to Port  
 Ko Lon to Starboard  
 FINISH

**Course 12**

START  
 Mark 1 to Port  
 Mark 2 to Port  
 Ko Lon to Port  
 Cape Panwa Safe Water Mark to Port  
 Pass through GATE  
*(Committee Boat to STB, Pin to Port)*  
 Mark 1 to Port  
 FINISH

**Course 14**

START  
 Mark 1 to Port  
 Ko Bon to Port  
 Ko Lon to Port  
 Cape Panwa Safe Water Mark to Port  
 Pass through GATE *(Committee Boat to STB, Pin to Port)*  
 Mark 1 to Port  
 FINISH



**Course 15**

START  
 Mark 1 to Port  
 Mark 2 to Port  
 Round Pin to Port  
 Mark 1 to Port  
 Mark 2 to Port  
 FINISH

**Course 16**

START  
 Mark 1 to Port  
 Ko Bon to Port  
 Ko Lon to Starboard  
 Round Pin to Port  
 Mark 1 to Port  
 FINISH

**Course 17**

START  
 Mark 2 to Port  
 Round Koh Lon to Port  
 FINISH

**Course 18**

START  
 Mark 2 to Port  
 Ko Bon to Port  
 Ko Lon to Port  
 FINISH

Mark positions, shapes and colours shown in the course diagrams are for illustration only. If there is any discrepancy between a course diagram and the written description, then the written description shall prevail.