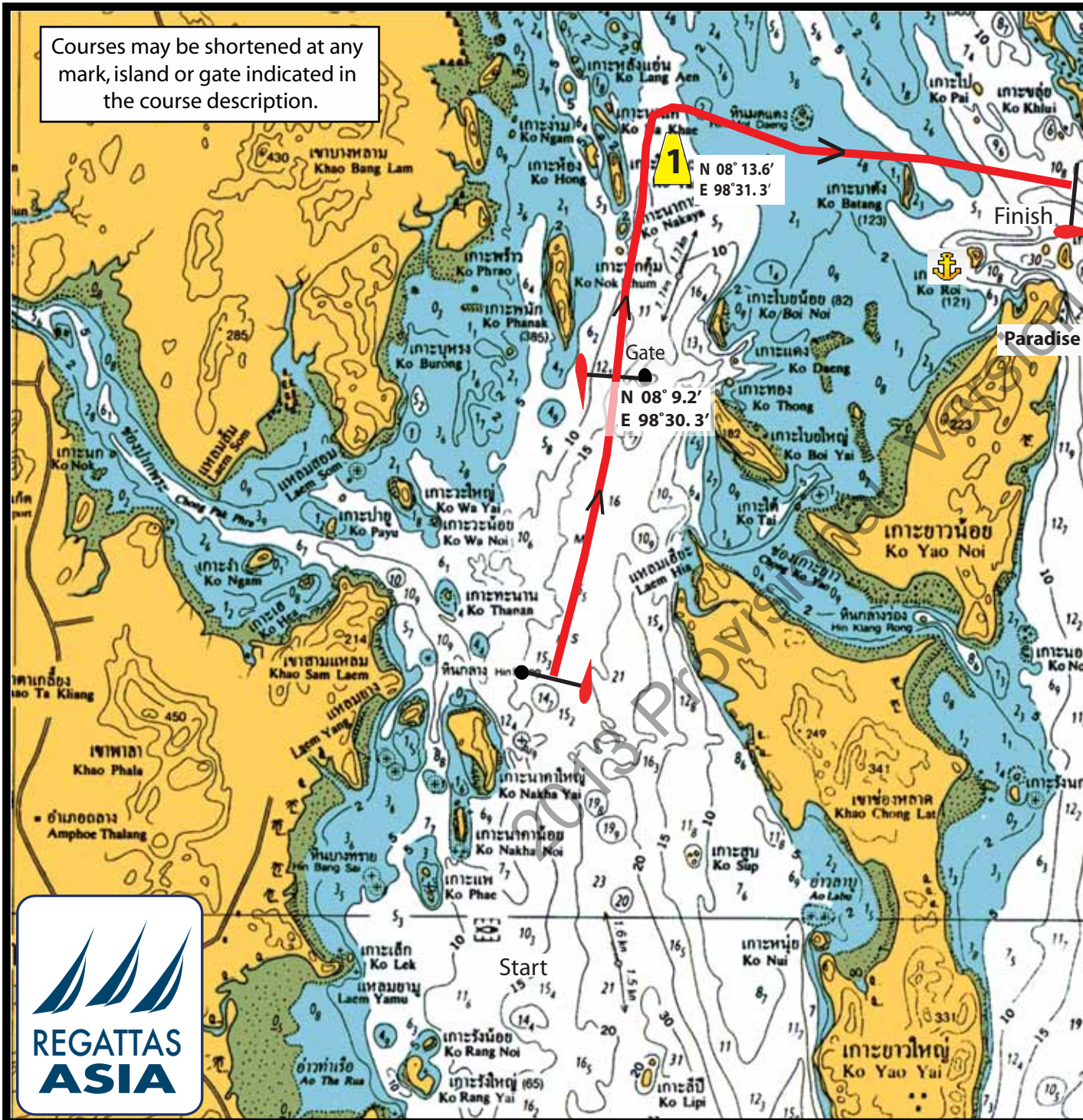


Courses may be shortened at any mark, island or gate indicated in the course description.



The Paradise Koh Yao  
Boutique Beach Resort & Spa

**Course 1 - 17 Miles (illustrated)**  
**FIRST WARNING SIGNAL 09.00**

START off Ko Naka Yai  
Through Gate Ko Phanak,  
(Committee Boat to PORT)  
Round Mark 1, East of Ko Yai, to STARBOARD  
Pass Hin Mot Deng to PORT  
Pass Ko Batang to STARBOARD  
FINISH off Ko Kudu

After finish, proceed to suitable anchorage  
for prevailing conditions.

Longtail transfers commence at 15.00





## FIRST WARNING SIGNAL 08.30

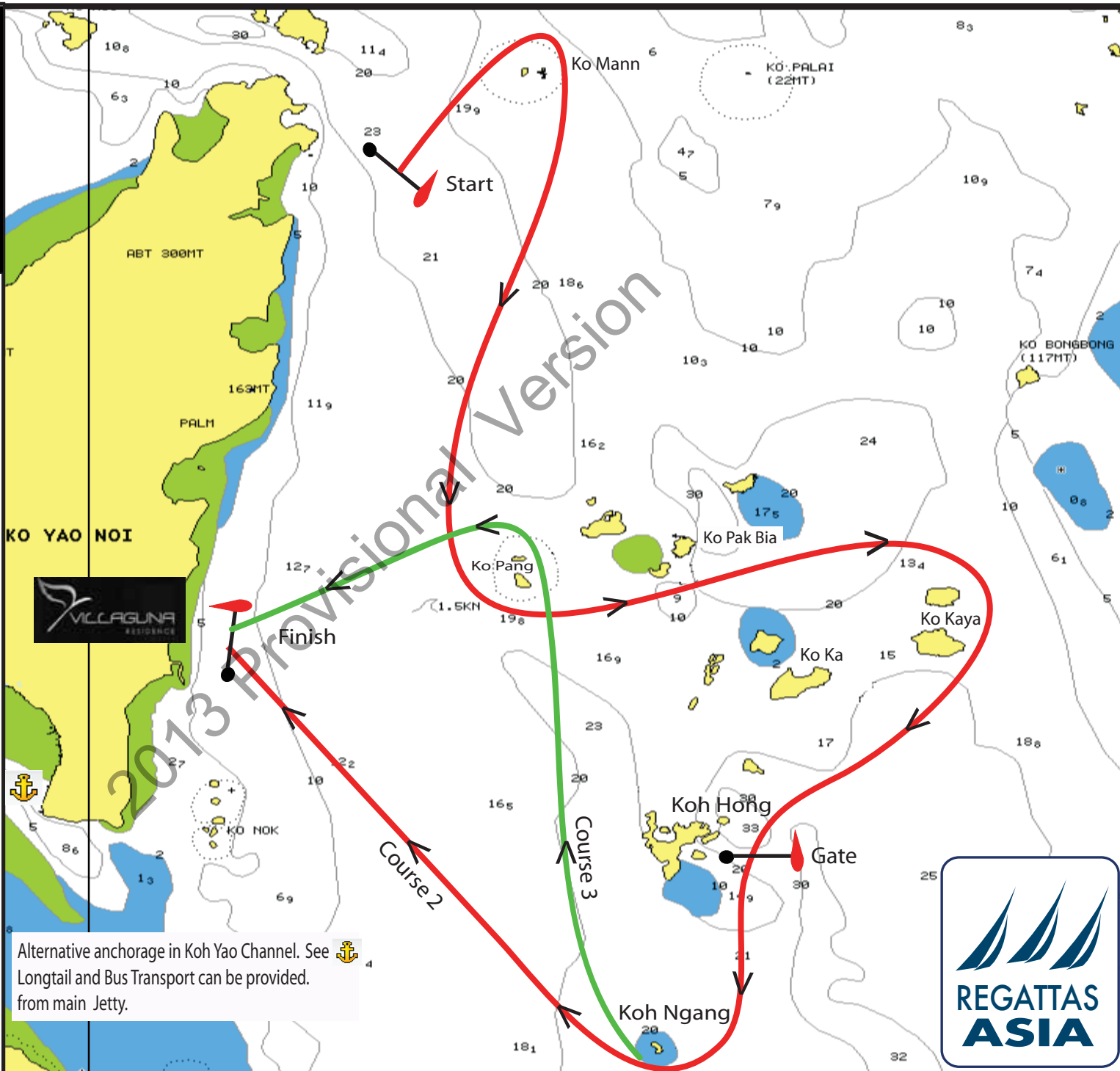
### Course 2 - 18 Miles (illustrated)


Start East of Ko Yao Noi  
 Round Ko Mann Group to Starboard  
 Round Ko Pang to Port  
 Pass Ko Pak Bia to Port  
 Pass Ko Ka to Starboard  
 Round Koh Kaya to Starboard  
 THROUGH Gate East of Koh Hong -  
 (Committee boat to PORT)  
 Round Ko Ngang to Starboard  
 FINISH off Villaguna.

### Course 3 - 21 Miles

Start East of Ko Yao Noi  
 Round Ko Mann Group to Starboard  
 Round Ko Pang to Port  
 Pass Ko Pak Bia to Port  
 Pass Ko Ka to Starboard  
 Round Koh Kaya to Starboard  
 THROUGH Gate East of Koh Hong -  
 (Committee boat to PORT)  
 Round Ko Ngang to Starboard  
 Round Ko Pang to Port  
 FINISH off Villaguna.

In Calm Weather anchor off Villaguna in 10m Water.  
 Longtails will operate pick up from 15.00



Alternative anchorage in Koh Yao Channel. See  4  
 Longtail and Bus Transport can be provided.  
 from main Jetty.



## FIRST WARNING SIGNAL 08.30

### Course 4 - 15 Miles

Start East of Ko Yao Noi  
Round Ko Pang Starboard  
THROUGH Gate East of Ko Hong -  
(Committee boat to PORT)  
Pass Between Ko Deng and Ko Samet  
FINISH off Ao Nang

### Course 5 - 21 Miles

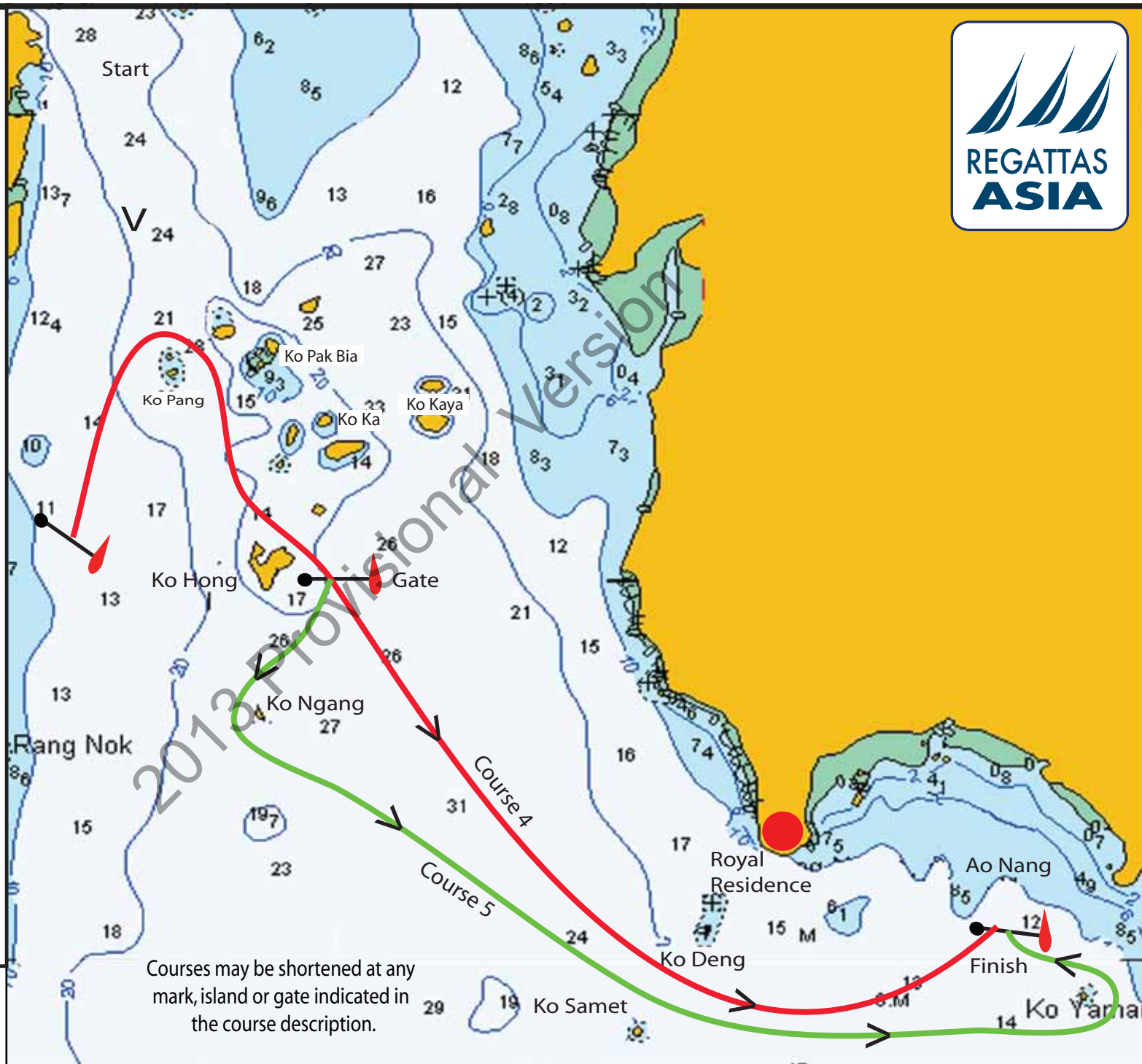
Start East of Ko Yao Noi  
Round Ko Pang Starboard  
THROUGH Gate East of Ko Hong -  
(Committee boat to PORT)  
Round Ko Ngang to Port  
Pass Between Ko Deng and Ko Samet  
Round Ko Yaman  
FINISH off Ao Nang

## FREE NIGHT IN KRABI

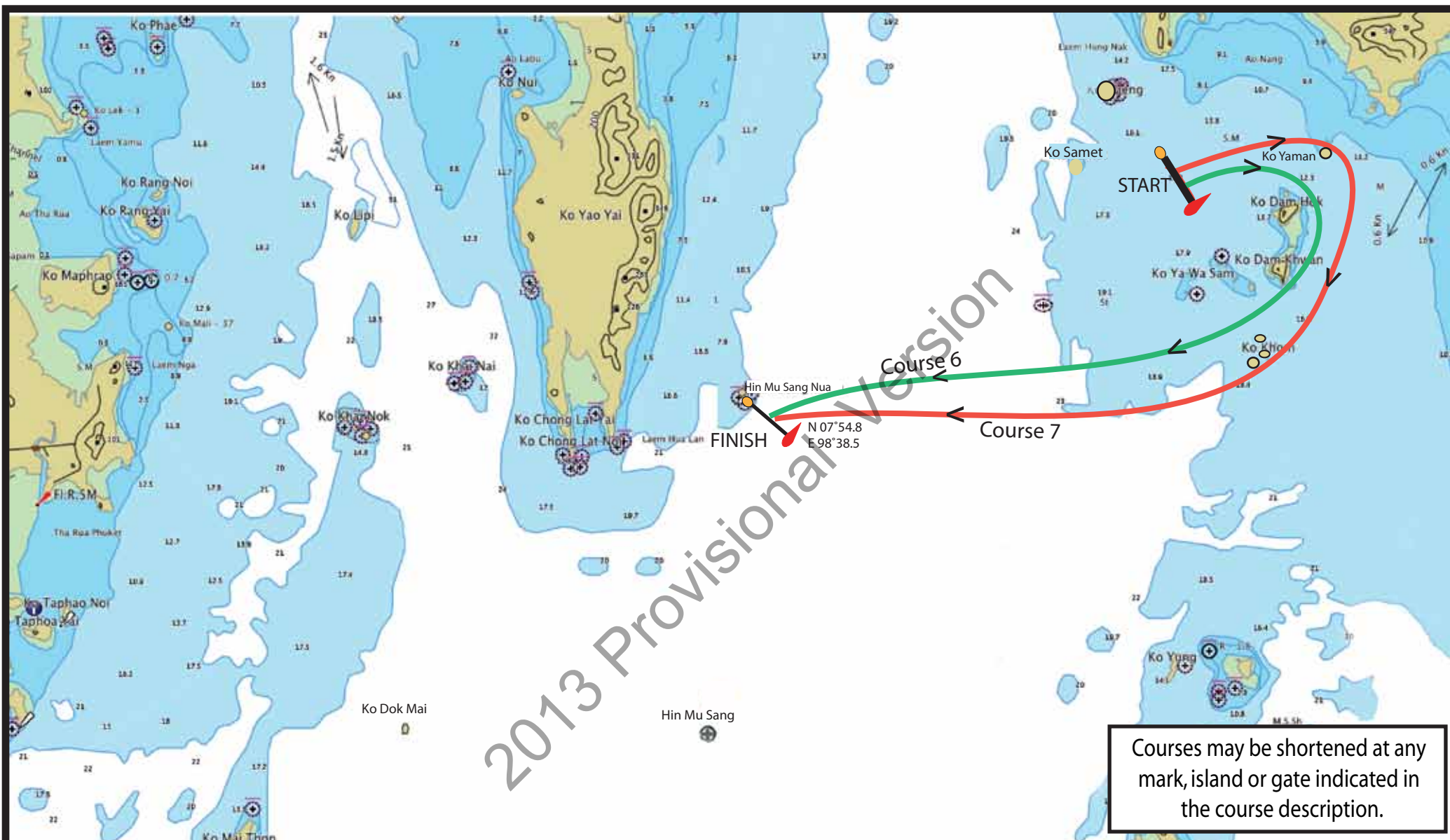
No Party tonight.  
Free night to experience Krabi.

After finish, proceed to suitable  
anchorage for prevailing conditions.

If there is any discrepancy between the course  
diagram and the written description, then the written  
description shall prevail.



Courses may be shortened at any  
mark, island or gate indicated in  
the course description.



**Course 6 - 14 Miles** █

START  
 Round Ko Dam Hok to Starboard  
 Pass Ko Dam Khwan to Starboard  
 FINISH (Hin Mu Sang Nua)

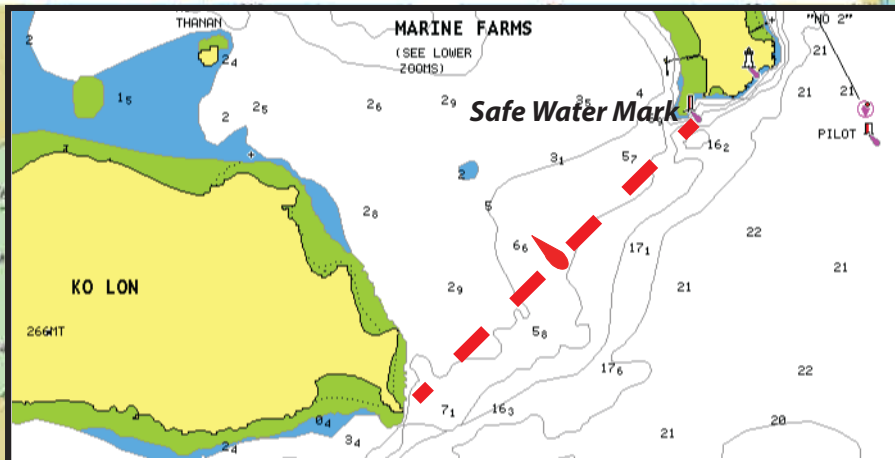
**Course 7 - 17 Miles** █

START  
 Round Ko Yaman Starboard  
 Pass Ko Dam Hok and Koh Dam Khwan to Starboard  
 Pass Ko Khom Group to Starboard, FINISH (Hin Mu Sang Nua)

**FIRST WARNING SIGNAL 08.00**

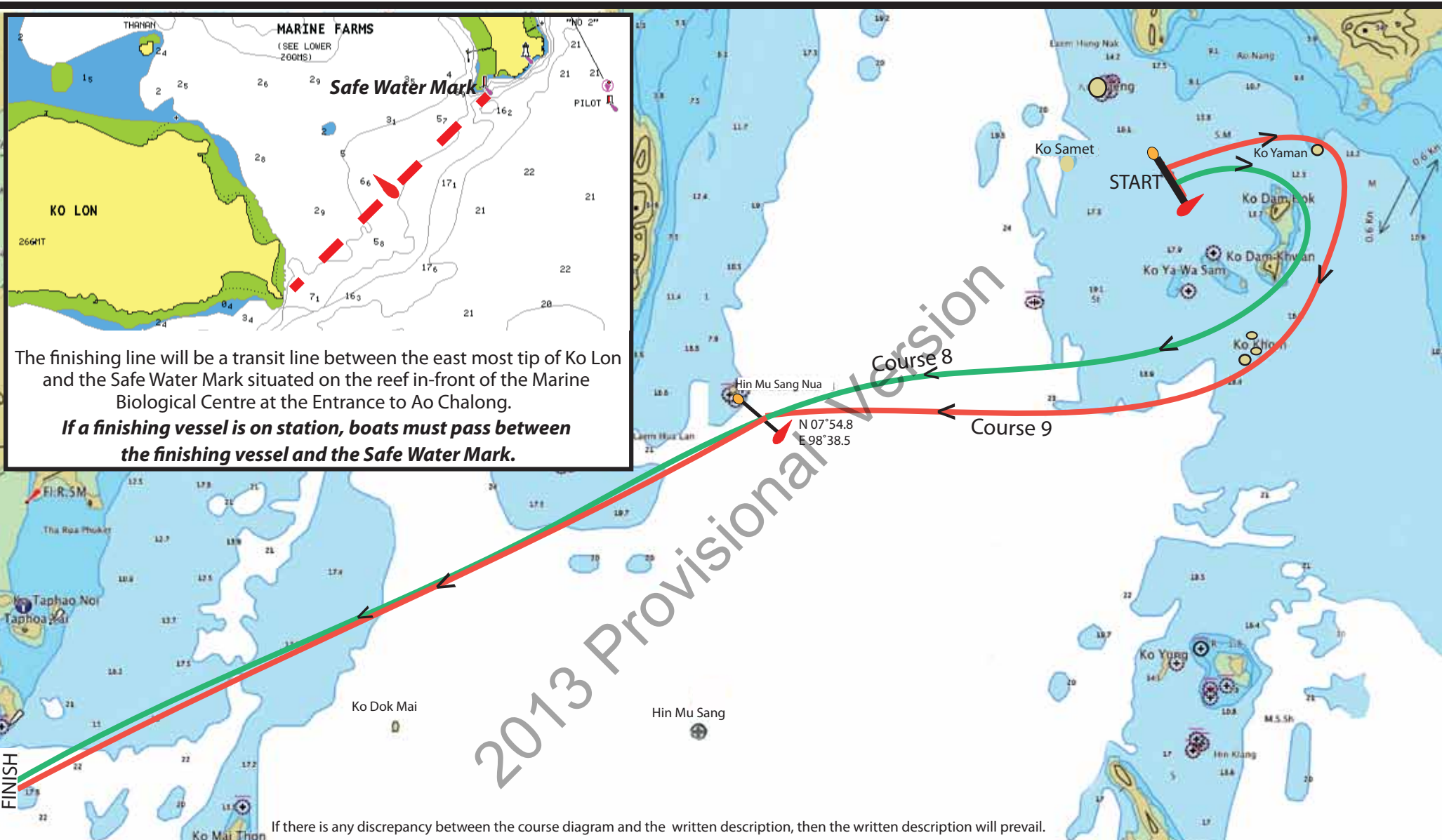
If there is any discrepancy between the course diagram and the written description, then the written description will prevail.





The finishing line will be a transit line between the east most tip of Ko Lon and the Safe Water Mark situated on the reef in-front of the Marine Biological Centre at the Entrance to Ao Chalong.

***If a finishing vessel is on station, boats must pass between the finishing vessel and the Safe Water Mark.***



If there is any discrepancy between the course diagram and the written description, then the written description will prevail.

**Course 8 - 31 Miles**



START  
 Round Ko Dam Hok to Starboard  
 Pass Ko Dam Khwan to Starboard  
 Through Gate (Hin Mu Sang Nua)  
 FINISH (Entrance to Ao Chalong - See Note.)

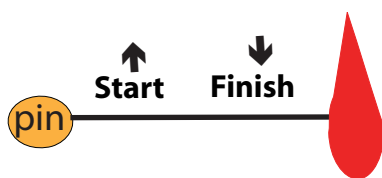
**Course 9 - 33 Miles**



START  
 Round Ko Yaman Starboard, Pass Ko Dam Hok and Koh Dam Khwan to Starboard  
 Pass Ko Khom Group to Starboard  
 Through Gate (Hin Mu Sang Nua)  
 FINISH (Entrance to Ao Chalong - See Note.)

**FIRST WARNING SIGNAL 08.00**





2013 Provisional Version

## Important Information (All Courses)

### Special Signals:

#### Return to Finish

A committee boat at a mark displaying **Code Flag R** (red background with yellow cross) means complete the current rounding or passing and race directly to the finish line



### Schedule of Races

Race Day 1 - 31st January  
 Race Day 2 - 1st February  
 Race Day 3 - 2nd February  
 Race Day 4 - 3rd February

First Warning Signal 09.00  
 First Warning Signal 08.30  
 First Warning Signal 08.30  
 First Warning Signal 08.00

The Bay RegattaTides - 2013

At Koh Taphao Noi (Phuket) - Predicted heights of water in meters above lowest low water

HOURS	0	1	2	3	4	5	6	7	8	9	10	11	12	13	14	15	16	17	18	19	20	21	22	23
DAYS																								
30	3.2	3.1	2.6	2.1	1.4	0.9	0.6	0.7	1.0	1.6	2.2	2.7	2.9	2.9	2.7	2.2	1.7	1.2	0.9	0.8	1.1	1.6	2.2	2.7
31	3.1	3.1	2.8	2.4	1.8	1.2	0.8	0.7	0.8	1.3	1.9	2.4	2.8	3.0	2.9	2.5	2.0	1.5	1.0	0.9	1.0	1.4	1.9	2.4
1	2.8	3.0	2.9	2.6	2.1	1.5	1.0	0.8	0.8	1.1	1.6	2.1	2.6	2.9	2.9	2.7	2.3	1.8	1.3	1.0	1.0	1.2	1.6	2.1
2	2.5	2.8	2.8	2.6	2.3	1.8	1.3	1.0	0.9	1.0	1.3	1.8	2.3	2.6	2.8	2.8	2.5	2.1	1.7	1.3	1.1	1.2	1.4	1.8
3	2.2	2.4	2.6	2.6	2.4	2.1	1.7	1.3	1.1	1.0	1.2	1.5	2.0	2.3	2.6	2.7	2.6	2.4	2.1	1.7	1.4	1.3	1.3	1.5

### Courses 10 - 13 Windward/ Leeward

- 10. START 2 - 1 - 2 - 1 - 2 - Finish (Pin to Starboard C. Boat to Port)
- 11. START 2 - 1 - 2 - Finish (Pin to Starboard C. Boat to Port)
- 12. START 1 - Pin - 1 - Pin - 1 - Finish (Pin to Starboard C. Boat to Port)
- 13. START 1 - Pin - 1 - Finish (Pin to Starboard C. Boat to Port)

All mark roundings to Port

### Upcoming Thailand Regattas 2013

Top of the Gulf (Pattaya)  
 Koh Samui Regatta  
 Phuket Multihull Championship  
 Cape Panwa Hotel Phuket Race Week  
 Phuket King's Cup Regatta

3rd May - 7th May  
 25th May - 1st June  
 July  
 17th - 21st July  
 30th Nov - 7th December